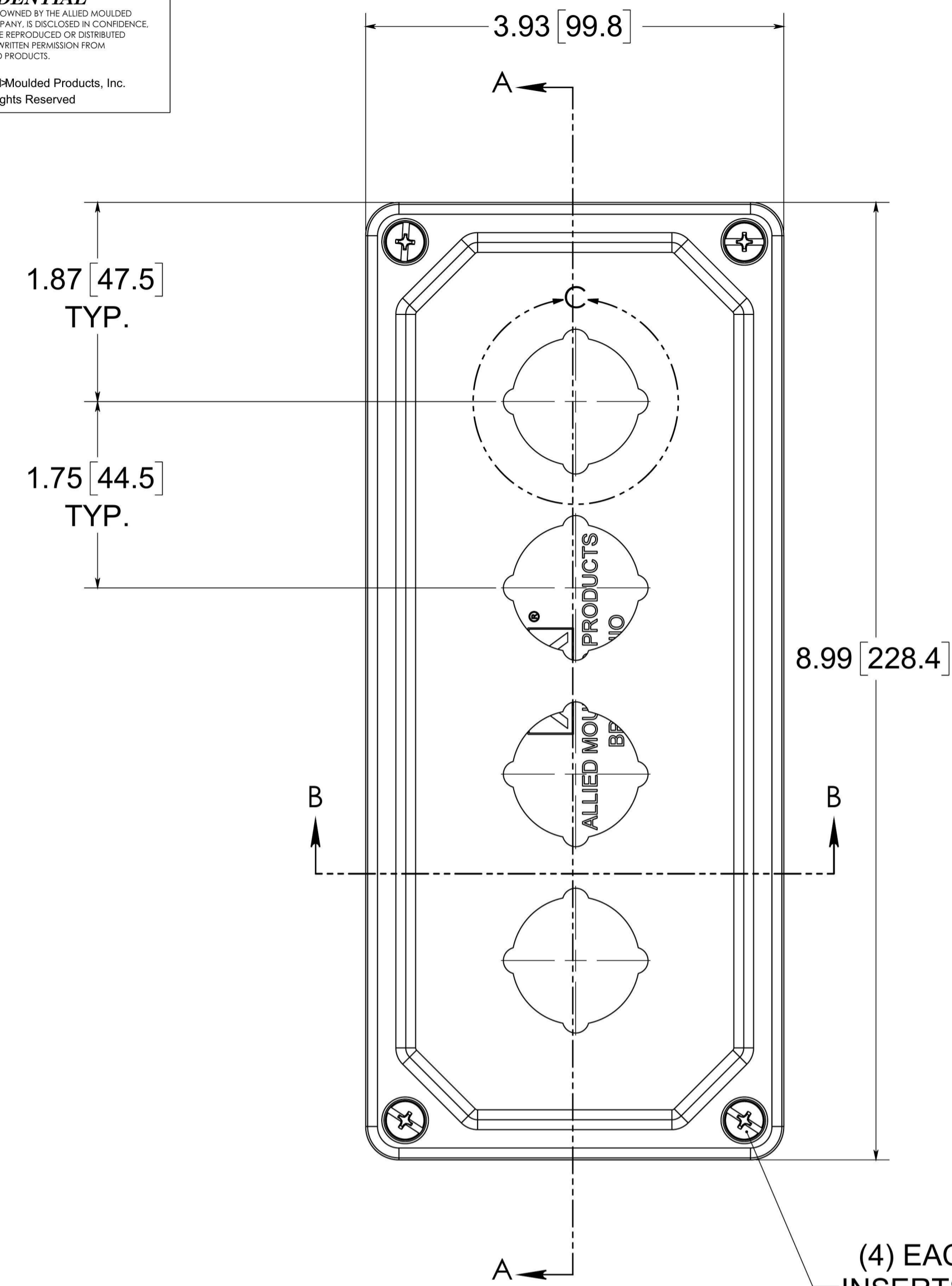
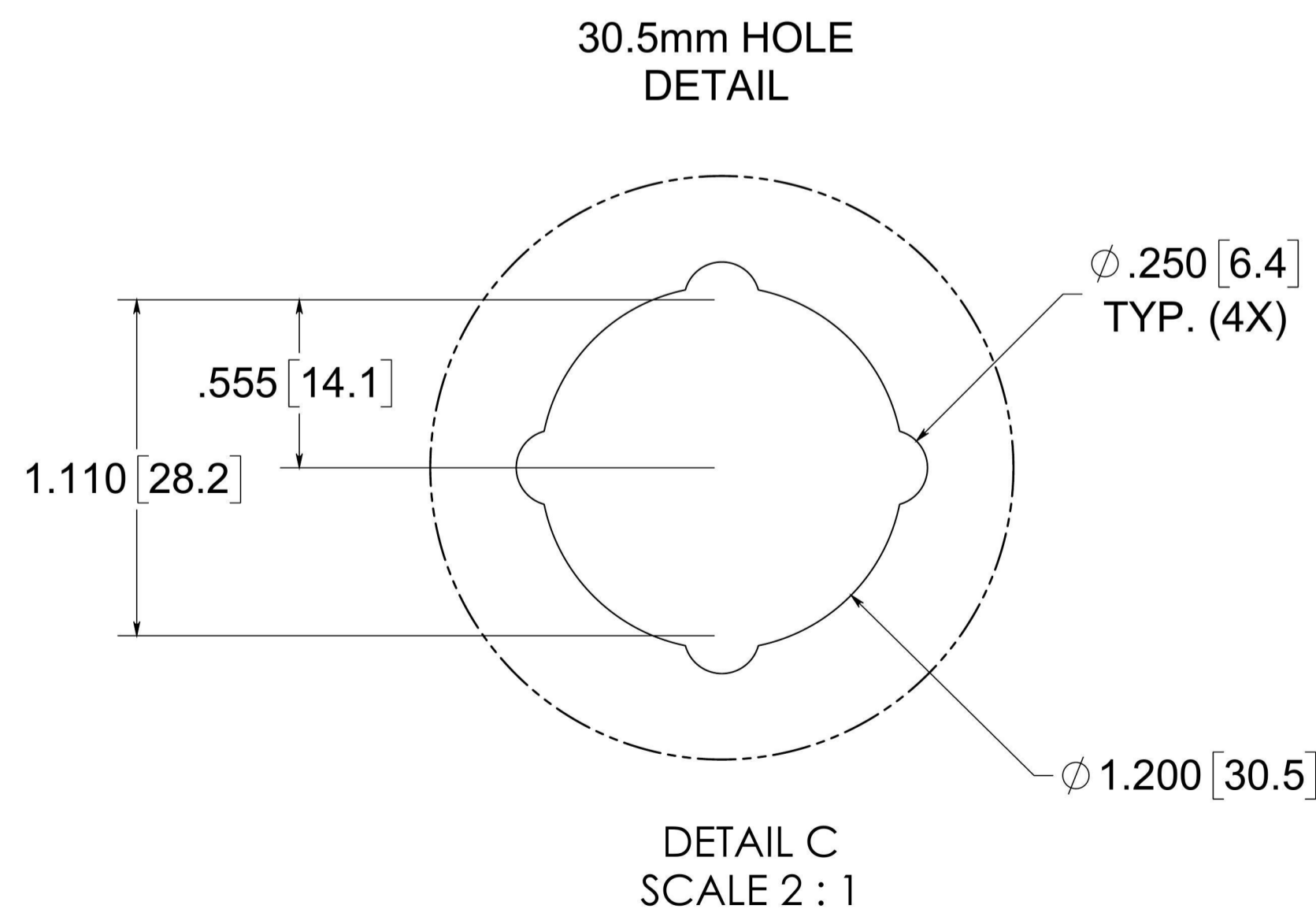
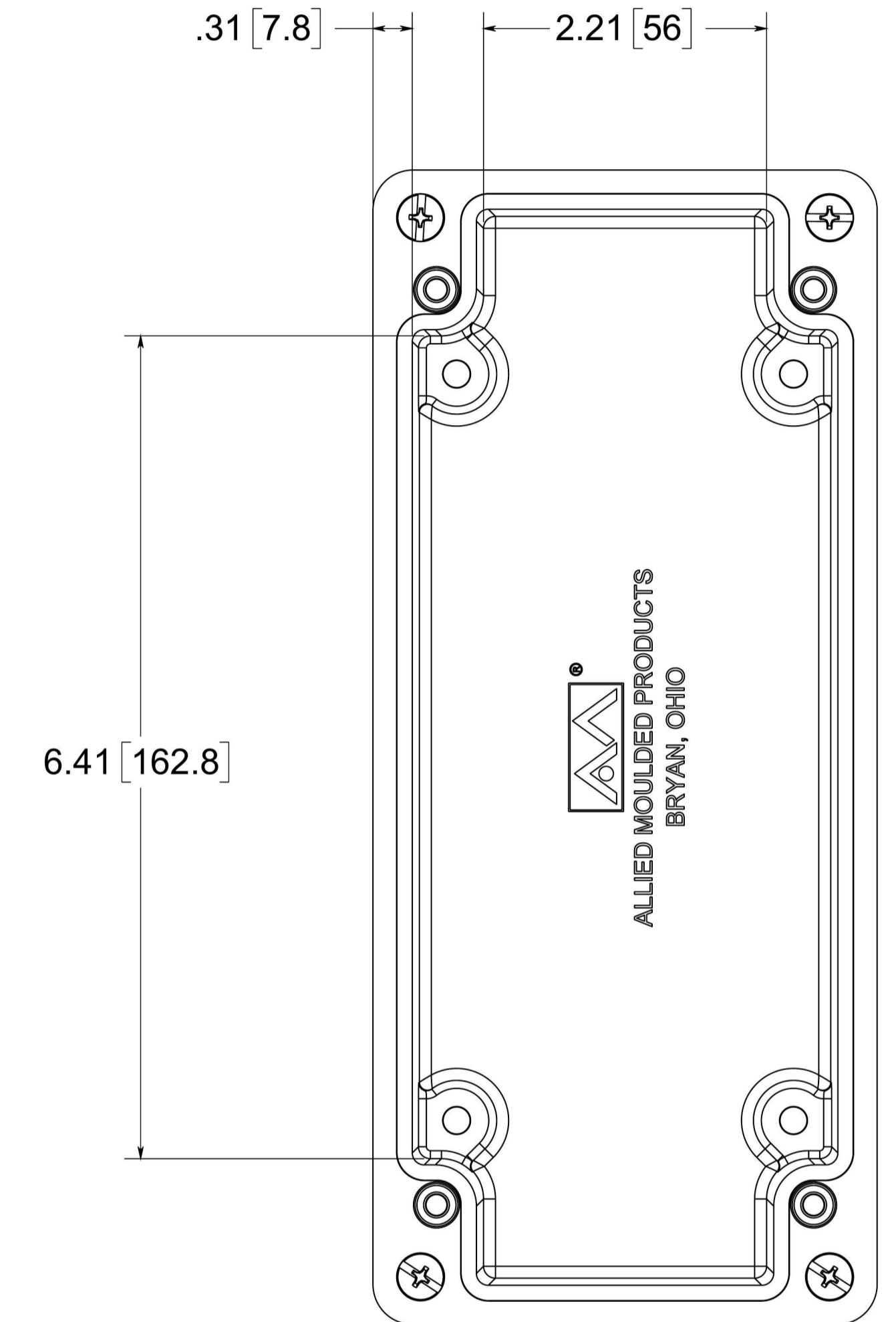
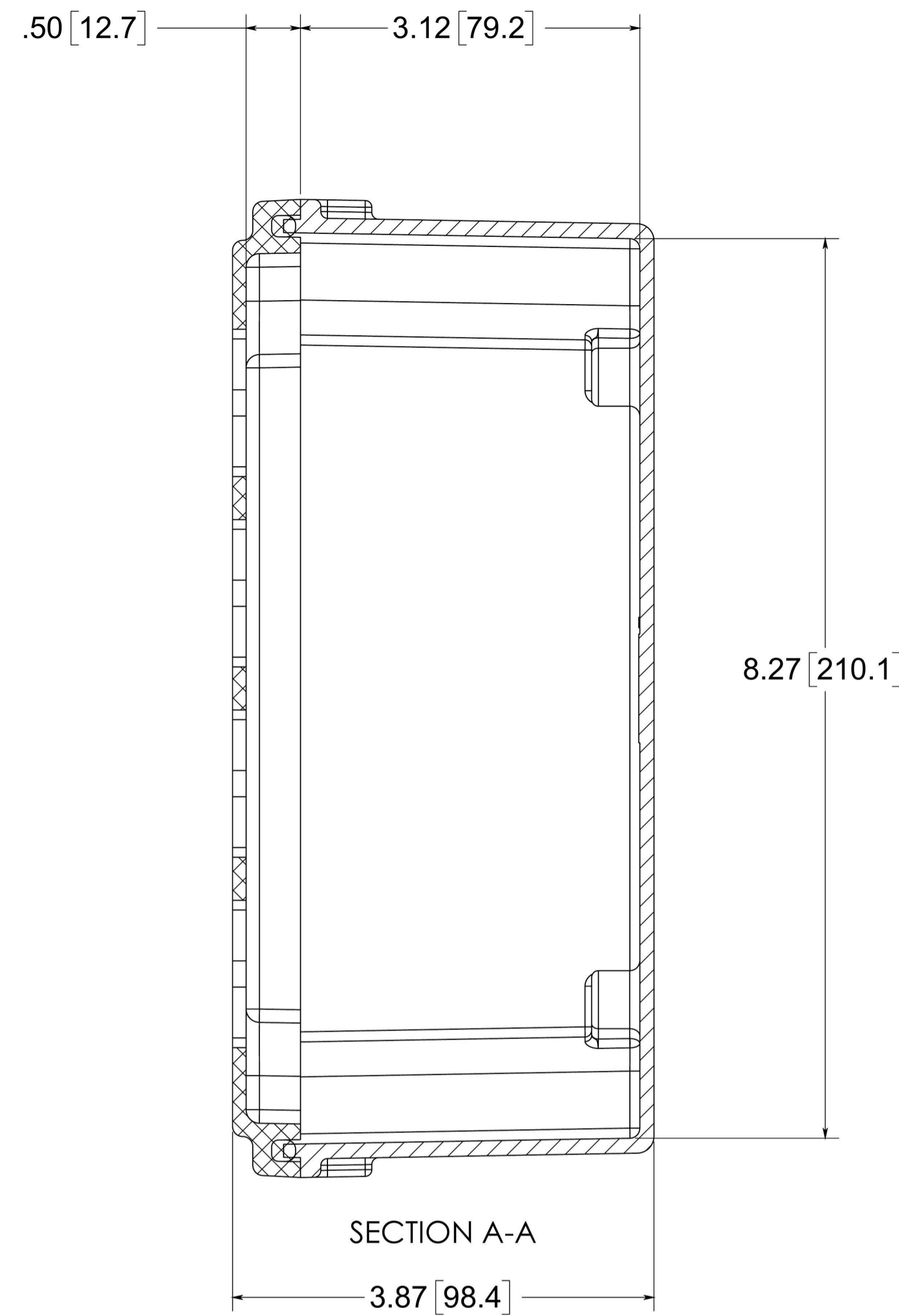
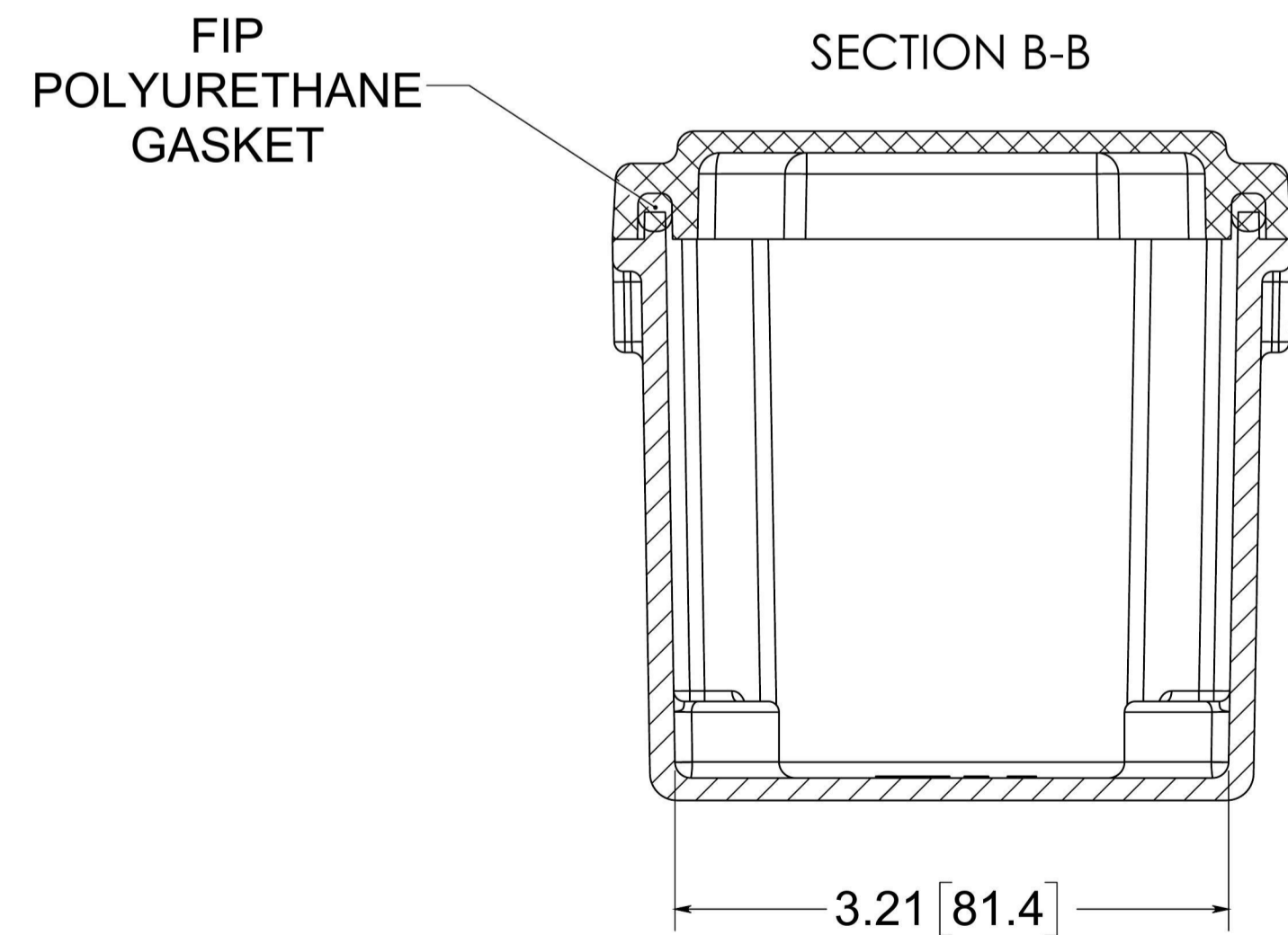


**CONFIDENTIAL**  
 THIS MATERIAL IS OWNED BY THE ALLIED MOULDED PRODUCTS COMPANY. IT IS DISCLOSED IN CONFIDENCE AND IS NOT TO BE REPRODUCED OR DISTRIBUTED WITHOUT PRIOR WRITTEN PERMISSION FROM ALLIED MOULDED PRODUCTS.  
 © CopyRight Allied Moulded Products, Inc. All Rights Reserved

Date	Rev	Description	ECN No.	DR	CK	REL
07/05/2017	01	INITIAL RELEASE	ECN-12131	SMZ	GFR	GEL
-	-	-	-	-	-	-
-	-	-	-	-	-	-



(4) EACH #10-32 BRASS INSERTS AND STAINLESS STEEL COVER SCREWS



NOTE:  
 DATA SUBJECT TO CHANGE WITHOUT NOTICE

MATERIAL:  
 BOX & COVER - COMPRESSION MOLDED FIBERGLASS REINFORCED POLYESTER

DRAWING STAMP		MOLD VERSION		PROJECT NO.	ASSET NO.	BOM PART NO.
FOR QUOTATION ONLY		<MOLD VERSION>				
UNLESS OTHERWISE SPECIFIED: DIMENSIONS ARE IN INCHES		STANDARD SYMBOLS		<b>ALLIED MOULDED PRODUCTS</b> BRYAN, OHIO The Original Fiber Glass Outlet Box		
TOLERANCES: .XX = ±.01 .XXX = ±.005 FRACTIONAL ± 1/64 ANGULAR ± 0°30'		D = MINUS DRAFT M = MATCH DRILL 1 = 1° DRAFT 3 = 3° DRAFT S = STEEL SAFE		<b>AM Series</b> Admin 6/14/2017 SMZ 07/05/2017 GFR 07/13/2017 GEL 07/13/2017		
PERPEND.: .005° CONCEN.: .005°		DRAWING SIZE		SEE BOM FINISH/TREAT SEE NOTES PRINT NUMBER		
SHEET 1 OF 1 DO NOT SCALE		CRIB NO.:		AM4PB 01		